



# **Welcome to the NCCN 2024 Breast Cancer Congress**

NCCN would like to thank the outstanding faculty who are presenting and you for attending this educational program.

We hope you find the information presented useful to your practice, and we encourage you to attend future NCCN educational initiatives.

<b>Agenda</b>	<b>Pages 2 – 3</b>
<b>Accreditation Information</b>	<b>Pages 4 – 7</b>
<i>Supporting Organizations</i>	<i>Page 5</i>
<i>Claiming CE Credit</i>	<i>Page 7</i>
<b>Disclosure Information</b>	<b>Pages 8 – 10</b>
<b>Faculty Biographies</b>	<b>Pages 11 – 15</b>



All times are listed as Central Standard Time (UTC/GMT -6.)

8:15 AM – 9:00 AM	<b>Registration, Breakfast, and Exhibits</b>
9:00 AM – 9:05 AM	<b>Opening Remarks</b> William J. Gradishar, MD <i>Robert H. Lurie Comprehensive Cancer Center of Northwestern University</i>
9:05 AM – 9:30 AM	<b>Biomarkers and Gene Panel Testing in Early-Stage Breast Cancer</b> Hatem Soliman, MD <i>Moffitt Cancer Center</i>
9:30 AM – 9:55 AM	<b>Next-Generation Sequencing Testing in the Metastatic Setting</b> Heather A. Parsons, MD, MPH <i>Dana-Farber Cancer Institute</i>
9:55 AM – 10:05 AM	<b>Q&amp;A Panel with Dr. Soliman and Dr. Burstein</b>
10:05 AM – 10:15 AM	<b>Break and Exhibits</b>
10:15 AM – 10:40 AM	<b>Neoadjuvant/Adjuvant Treatment for HER2-Positive Breast Cancer with SABCS Updates*</b> Patricia Robinson, MD <i>Robert H. Lurie Comprehensive Cancer Center of Northwestern University</i>
10:40 AM – 11:05 AM	<b>Adjuvant Treatment of ER-Positive Breast Cancer with SABCS Updates*</b> Mei Wei, MD <i>Huntsman Cancer Institute at the University of Utah</i>
11:05 AM – 11:30 AM	<b>Updates to the Management of Triple Negative Breast Cancer with SABCS Updates*</b> Cesar A. Santa-Maria, MD, MSCI <i>The Sidney Kimmel Comprehensive Cancer Center at Johns Hopkins</i>
11:30 AM – 11:40 AM	<b>Q&amp;A Panel with Dr. Robinson, Dr. Wei, and Dr. Santa-Maria</b>
11:45 AM – 12:10 PM	<b>Updates in Radiation Therapy for DCIS and Invasive Breast Cancer with SABCS Updates</b> Meena S. Moran, MD <i>Yale Cancer Center/Smilow Cancer Hospital</i>
12:10 PM – 12:35 PM	<b>Surgical Management of Invasive Breast Cancer with SABCS Updates</b> Laura H. Rosenberger, MD, MS <i>Duke Cancer Institute</i>
12:35 PM – 12:45 PM	<b>Q&amp;A Panel with Dr. Moran and Dr. Rosenberger</b>
12:45 PM – 1:45 PM	<b>Lunch and Exhibits</b>
1:45 PM – 2:45 PM	<b>Issues with Sexuality and Sexual Function in Patients with Breast Cancer</b> Tarah Ballinger, MD <i>Indiana University Melvin and Bren Simon Comprehensive Cancer Center</i> Elena Ratner, MD, MBA <i>Yale Cancer Center/Smilow Cancer Hospital</i> Jennifer Barsky Reese, PhD <i>Fox Chase Cancer Center</i>

\*Session offers pharmacotherapeutic contact hours for nurses.



*All times are listed as Central Standard Time (UTC/GMT -6.)*

- |                   |  |
|-------------------|--|
| 2:50 PM – 3:25 PM | <b>Cardiovascular Health After Breast Cancer Treatment</b><br>Eric H. Yang, MD<br><i>UCLA Jonsson Comprehensive Cancer Center</i>  |
| 3:25 PM – 3:35 PM | <b>Break and Exhibits</b>  |
| 3:35 PM – 4:00 PM | <b>Advances in the Management of HR-Positive Metastatic Breast Cancer with SABCS Updates*</b><br>Kari B. Wisinski, MD<br><i>University of Wisconsin Carbone Cancer Center</i>                                |
| 4:00 PM – 4:25 PM | <b>Advances in the Management of HER2-Positive Metastatic Breast Cancer with SABCS Updates*</b><br>William J. Gradishar, MD<br><i>Robert H. Lurie Comprehensive Cancer Center of Northwestern University</i> |
| 4:25 PM – 4:40 PM | <b>Q&amp;A Panel with Dr. Wisinski and Dr. Gradishar</b>   |
| 4:40 PM – 4:45 PM | <b>Closing Remarks</b><br>William J. Gradishar, MD<br><i>Robert H. Lurie Comprehensive Cancer Center of Northwestern University</i>  |

*\*Session offers pharmacotherapeutic contact hours for nurses.*



## **Program Overview**

The *NCCN 2024 Breast Cancer Congress with Updates from the 2023 San Antonio Breast Cancer Symposium* will provide expert insights on the current recommendations of care for patients with breast cancer and include the latest clinical research updates to assist clinicians in formulating breast cancer management strategies.

## **Intended Audience**

This educational program is designed to meet the educational needs of physicians, nurse practitioners, nurses, PAs, pharmacists, social workers, and other health care professionals who manage patients with breast cancer.

## **Goal of Education**

The goal of the program is to ensure that members of the interprofessional oncology care team have the knowledge and skills necessary to:

- Summarize the current standards of oncology care, key updates in the NCCN Clinical Practice Guidelines in Oncology (NCCN Guidelines®), and clinical research updates from the 2023 San Antonio Breast Cancer Symposium (SABCS) and integrate appropriate strategies into clinical practice to optimize the management of patients with cancer.
- Evaluate new, emerging and novel therapeutic agents, advances in care, and clinical trials data and apply relevant findings into the management of patients with breast cancer.

## **Learning Objectives**

After completing this program, participants should be able to:

### **Biomarkers and Gene Panel Testing in Early-Stage Breast Cancer**

- Review the biomarkers and gene assays that impact treatment decisions for early-stage breast cancer.
- Incorporate biomarker testing and test results into clinical practice for the management of patients with early-stage breast cancer.

### **Next-Generation Sequencing Testing in the Metastatic Setting**

- Identify the various actionable biomarkers for metastatic breast cancer.
- Incorporate next-generation sequencing testing and test results into clinical practice to personalize the management of patients with metastatic breast cancer.

### **Neoadjuvant/Adjuvant Treatment for HER2-Positive Breast Cancer with SABCS Updates**

- Recognize key patient and clinical factors that influence selection of systemic neoadjuvant/adjuvant therapy for non-metastatic HER2-positive breast cancer.
- Discuss new and emerging strategies and treatment options for neoadjuvant/adjuvant treatment of non-metastatic HER2-positive breast cancer.

### **Adjuvant Treatment of ER-Positive Breast Cancer with SABCS Updates**

- Select evidence-based adjuvant treatment options for patients with ER-positive breast cancer based on risk of recurrence.
- Recognize key patient and clinical factors that influence selection of systemic adjuvant therapy for ER-positive breast cancer.



### **Learning Objectives (continued)**

#### **Updates to the Management of Triple Negative Breast Cancer with SABCS Updates**

- Describe the current therapeutic approaches for first-line management of metastatic HR-negative, HER2-negative metastatic breast cancer.
- Utilize evidence-based approaches to select first- and subsequent-line treatment options for patients with metastatic HR-negative, HER2-negative metastatic breast cancer.

#### **Updates to Radiation Therapy for DCIS and Invasive Breast Cancer with SABCS Updates**

- Develop an evidence-based approach for use of adjuvant radiation therapy for invasive non-metastatic breast cancer.
- Discuss current and emerging radiation treatment modalities for invasive non-metastatic breast cancer.

#### **Surgical Management of Invasive Breast Cancer with SABCS Updates**

- Individualize surgical management recommendations for invasive non-metastatic breast cancer.
- Discuss current and emerging data in the treatment of invasive non-metastatic breast cancer and integrate key findings into clinical practice.

#### **Issues with Sexuality and Sexual Function in Patients with Breast Cancer**

- Identify issues faced by breast cancer patients regarding sexual function and sexuality.
- Describe treatment options for sexual dysfunction that are available for patients with breast cancer.

#### **Cardiovascular Health After Breast Cancer Treatment**

- Describe risk factors for cardiovascular disease in breast cancer survivors.
- Discuss strategies to promote cardiovascular wellness in breast cancer survivors.

#### **Advances in the Management of HR-Positive Metastatic Breast Cancer with SABCS Updates**

- Select evidence-based first-line treatment options for patients with HR-positive and HER2-negative metastatic breast cancer.
- Integrate recent advances and available clinical data to optimally select and sequence agents in the treatment of HR-positive and HER2-negative metastatic breast cancer in second-line treatment and beyond.

#### **Advances in the Management of HER2-Positive Metastatic Breast Cancer with SABCS Updates**

- Select and sequence HER2-targeted agents in the first- and subsequent lines of treatment of HER2-positive metastatic breast cancer.
- Optimally manage common toxicities related to the HER2-targeted therapies.

### **Program Supporters**

This activity is supported by educational grants from:

- AstraZeneca
- Gilead Sciences, Inc.
- Menarini-Stemline
- Novartis
- Puma Biotechnology
- Seagen

This activity is supported by independent educational grants from:

- Daiichi Sankyo
- Merck & Co., Inc., Rahway, NJ, USA

This activity is supported by a grant from:

- Pfizer Inc.



## **Accreditation Statements**



JOINTLY ACCREDITED PROVIDER™  
INTERPROFESSIONAL CONTINUING EDUCATION

In support of improving patient care, National Comprehensive Cancer Network (NCCN) is jointly accredited by the Accreditation Council for Continuing Medical Education (AACME), the Accreditation Council for Pharmacy Education (ACPE), and the American Nurses Credentialing Center (ANCC), to provide continuing education for the healthcare team.

### **Physicians**

NCCN designates this live activity for a maximum of 6 *AMA PRA Category 1 Credits*™. Physicians should claim only the credit commensurate with the extent of their participation in the activity.

### **Nurses**

NCCN designates this educational activity for a maximum of 6 contact hours. This program offers 2 pharmacotherapeutic contact hours for nurses. Eligible sessions are noted on the agenda with an asterisk (\*).

### **Pharmacists**

NCCN designates this knowledge-based continuing education activity for 6 contact hours (0.6 CEUs) of continuing education credit. UAN: JA4008196-0000-24-001-L01-P

### **PAs**

NCCN has been authorized by the American Academy of PAs (AAPA) to award AAPA Category 1 CME credit for activities planned in accordance with AAPA CME criteria. This activity is designated for 6 AAPA Category 1 CME credits. PAs should only claim credit commensurate with the extent of their participation.

### **Social Workers**

As a Jointly Accredited Organization, NCCN is approved to offer social work continuing education by the Association of Social Work Boards (ASWB) Approved Continuing Education (ACE) program. Organizations, not individual courses, are approved under this program. State and provincial regulatory boards have the final authority to determine whether an individual course may be accepted for continuing education credit. NCCN maintains responsibility for this course. Social workers completing this course receive 6 continuing education credits.

### ***American Board of Internal Medicine Maintenance of Certification (MOC)***

Successful completion of this CME activity, which includes participation in the evaluation component, enables the participant to earn up to 6 medical knowledge MOC points in the American Board of Internal Medicine's (ABIM) Maintenance of Certification (MOC) program. Participants will earn MOC points equivalent to the amount of CME credits claimed for the activity. It is the CME activity provider's responsibility to submit participant completion information to ACCME for the purpose of granting ABIM MOC credit. Aggregated participant data will be shared with the commercial supporters of this activity.

### ***American Board of Pathology Continuing Certification (CC)***

This activity has been registered to offer credit in the American Board of Pathology's (ABPath) Continuing Certification program. Successful completion of this CME activity enables the participant to earn up to 6 Lifelong Learning (Part II) credits. Aggregated participant data will be shared with the commercial supporters of this activity.

### ***American Board of Surgery Continuous Certification (CC)***

Successful completion of this CME activity, which includes participation in the evaluation component, enables the learner to earn credit toward the CME requirements of the American Board of Surgery's Continuous Certification program. It is the CME activity provider's responsibility to submit learner completion information to ACCME for the purpose of granting ABS credit.

### ***American Board of Medical Specialties (MOC)***

*Through the American Board of Medical Specialties ("ABMS") ongoing commitment to increase access to practice relevant Continuing Certification Activities through the [ABMS Continuing Certification Directory](#), the **NCCN 2024 Breast Cancer Congress with Updates from the San Antonio Breast Cancer Symposium** has met the requirements as a **Lifelong Learning CME Activity** (apply toward general CME requirement) for the following ABMS Member Boards:*

### **ABMS Lifelong Learning CME Activity**

Medical Genetics and Genomics  
Pathology  
Radiology



### **How to Claim CE Credit**

**Before claiming CE credit**, please ensure that you have an NCCN account and will receive the correct type of credit.

1. Log-in at [www.nccn.org](http://www.nccn.org).
  - If you do not have an NCCN account, click *Create Account* to create one for free.
2. Click Profile on the left side menu.
3. Verify that your User Type matches the type of credit you will claim.
  - Physician/Surgeon/Oncologist = *AMA PRA Category 1 Credits™*; MOC points, if applicable\*
  - Physician Assistant = AAPA Category 1 CME credits
  - Pharmacist = ACPE contact hours\*
  - Nurse Practitioner = ANCC contact hours
  - Clinical Nurse Specialist = ANCC contact hours
  - Nurse/Oncology Nurse = ANCC contact hours
  - Case Manager (Nurse) = ANCC contact hours
  - Social Worker = ASWB continuing education credits
  - All Other User Types = certificate of participation
4. Scroll down and click Save if you make any changes.

**\*Physicians claiming ABIM, ABPath, or ABS MOC points:** ABIM/ABPath/ABS MOC points are reported to ABIM/ABPath/ABS once you have completed the post-test and evaluation and claimed your credits. **Be sure to enter your learner/diplomate ID and date of birth when prompted in the evaluation.** Your credit cannot be reported without this information.

**\*\*Pharmacists:** You must complete all requirements for credit by March 18, 2024. Continuing pharmacy education credit is reported to the CPE Monitor once you have completed the post-test and evaluation and claimed your credits. Before completing these requirements, be sure your NCCN profile has been updated with your NABP e-profile ID and date of birth. Your credit cannot be reported without this information.

**Credit claiming will open after the conclusion of the Congress.** (Friday, February 2, 2024, 4:45 PM CST.)

To claim your credits, you will need to log-in with the same email address used for program registration.

1. Log-in at [education.nccn.org/breast2024](http://education.nccn.org/breast2024)
2. Click the Take Course button.
3. Follow the prompts to complete the post-test and evaluation and claim your credits.

**Upon successful completion**, you will be able to view/print/download your certificate. If you have any questions or need further assistance, please contact the NCCN Continuing Education Department at [education@nccn.org](mailto:education@nccn.org).

**CE/MOC credit should be claimed for the Congress as a whole, not session by session.** You may claim credit for the Congress only one time. When calculating your total credits, you should take into account all of the sessions you viewed either live or via recording. (Please note that you have access to all of the session recordings for 60 days after the live Congress.)

**Pharmacists: You must complete all requirements for credit by March 18, 2024.**



### **NCCN Continuing Education Disclosure Policy**

It is the policy of NCCN that all planners, faculty, moderators, authors, reviewers and anyone involved in the planning and delivery of NCCN continuing education activities are expected to disclose **ALL** financial relationships they have had in the past **24 months** with ineligible companies. The ACCME *Standards for Integrity and Independence* require that individuals who refuse to provide this information will be disqualified from involvement in the planning and implementation of accredited continuing education presented by NCCN. NCCN identifies, mitigates, and discloses to learners all relevant financial relationships.

In addition, all content has been reviewed to ensure education promotes safe, effective patient care and does not promote the products or services of an ineligible company. Content, including any presentation of therapeutic options, is fair, balanced, evidence-based, scientifically accurate, and free of commercial bias and marketing.

### **Definitions**

**Ineligible Company:** An ineligible company is any entity whose primary business is producing, marketing, selling, re-selling, or distributing healthcare products used by or on patients.

**Relevant Financial Relationships:** Financial relationships of any dollar amount occurring within the past **24 months** are defined as relevant if the educational content an individual can control is related to the business lines or products of an ineligible company. There is no minimum financial threshold. We ask for disclosure of **ALL** financial relationships with ineligible companies, regardless of the amount and regardless of the potential relevance of each relationship to the education.

### **Faculty Disclaimers**

All faculty for this continuing education activity are competent in the subject matter and qualified by experience, training, and/or preparation for the tasks and methods of delivery.

Faculty presentations may include discussion of off-label use. Faculty will disclose that the use in question is not currently approved by the FDA per the product labeling or marketing.

*This list includes disclosures submitted to NCCN as of January 30, 2024.*





### **Faculty Disclosures**

The faculty listed below have **no relevant** financial relationship(s) with ineligible companies to disclose.

**Meena S. Moran, MD**  
**Jennifer Barsky Reese, PhD**  
**Laura H. Rosenberger, MD, MS**  
**Patricia Robinson, MD**

The faculty listed below have the following **relevant** financial relationship(s) with ineligible companies to disclose. All of the relevant financial relationships listed for these individuals have been mitigated.

**Tarah Ballinger, MD**  
Novartis Pharmaceuticals Corporation: Honoraria

**William J. Gradishar, MD**  
AstraZeneca Pharmaceuticals LP: Honoraria; Scientific Advisor  
Daiichi-Sankyo Co.: Honoraria; Scientific Advisor  
Eli Lilly and Company: Scientific Advisor

**Heather A. Parsons, MD, MPH**  
AstraZeneca Pharmaceuticals LP: Consulting Fee  
Daiichi-Sankyo Co.: Consulting Fee  
Guardant Health: Honoraria

**Elena Ratner, MD, MBA**  
Aspira: Scientific Advisor  
Zai Labs: Scientific Advisor

**Cesar A. Santa-Maria, MD, MSCI**  
AstraZeneca Pharmaceuticals LP: Grant/Research Support  
Bristol Myers Squibb: Grant/Research Support  
Celldex Therapeutics: Grant/Research Support  
Merck & Co., Inc.: Grant/Research Support  
Novartis Pharmaceuticals Corporation: Grant/Research Support  
Pfizer Inc.: Grant/Research Support

**Hatem Soliman, MD**  
AstraZeneca Pharmaceuticals LP: Consulting Fee  
Eli Lilly and Company: Consulting Fee  
Merck & Co., Inc.: Product/Speakers Bureau  
Novartis Pharmaceuticals Corporation: Consulting Fee  
Puma Biotechnology: Consulting Fee  
SeaGen: Consulting Fee

**Mei Wei, MD**  
AstraZeneca Pharmaceuticals LP: Scientific Advisor  
Gilead Sciences, Inc.: Consulting Fee  
Relay Therapeutics: Scientific Advisor

*This list includes disclosures submitted to NCCN as of January 30, 2024.*



**Faculty Disclosures (continued)**

The faculty listed below have the following **relevant** financial relationship(s) with ineligible companies to disclose. All of the relevant financial relationships listed for these individuals have been mitigated.

**Kari B. Wisinski, MD**

AstraZeneca Pharmaceuticals LP: Consulting Fee; Grant/Research  
Context Therapeutics: Grant/Research Support  
Genentech, Inc.: Grant/Research Support  
Gilead Sciences, Inc.: Consulting Fee  
Loxo@Lilly: Consulting Fee  
Novartis Pharmaceuticals Corporation: Grant/Research Support  
Pfizer Inc.: Consulting Fee; Grant/Research Support  
Puma Biotechnology: Grant/Research Support  
Relay Therapeutics: Grant/Research Support  
sanofi-aventis U.S.: Grant/Research Support  
SeaGen: Grant/Research Support  
Stemline Therapeutics: Consulting Fee  
Zymeworks: Grant/Research Support

**Eric H. Yang, MD**

Amgen: Grant/Research Support  
Boehringer Ingelheim GmbH: Grant/Research Support  
Bristol Myers Squibb: Grant/Research Support  
CSL Behring: Grant/Research Support  
Edwards Lifesciences: Consulting Fee  
Eli Lilly and Company: Grant/Research Support  
Pfizer Inc.: Consulting Fee  
Xencor: Consulting Fee

**NCCN Staff Disclosures**

None of the other planners for this educational activity have **relevant** financial relationship(s) to disclose with ineligible companies whose primary business is producing, marketing, selling, re-selling, or distributing healthcare products used by or on patients.

*This list includes disclosures submitted to NCCN as of January 30, 2024.*



Congress Chairman **William J. Gradishar, MD**, is the Betsy Bramsen Professor of Breast Oncology, Professor of Medicine, and Chief in the Division of Hematology and Medical Oncology at the Feinberg School of Medicine at Northwestern University. Dr. Gradishar also serves as Deputy Director for the Clinical Network of the Robert H. Lurie Comprehensive Cancer Center, where he also acts as Director of the Maggie Daley Center for Women's Cancer Care. Additionally, he has served as Chair of the Annual Lynn Sage Comprehensive Breast Cancer Symposium since its inception.

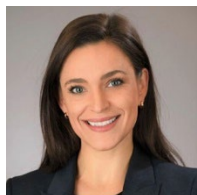
Dr. Gradishar earned his medical degree from the University of Illinois Abraham School of Medicine. He later completed a residency and chief residency in internal medicine at Michael Reese Hospital and Medical Center and a fellowship in medical oncology at the University of Chicago. He is board-certified in internal medicine and medical oncology.

Dr. Gradishar specializes in breast cancer therapeutics, with a focus on new endocrine therapy, chemotherapy, and biologic agents. He is a Fellow of the American College of Physicians and the American Society of Clinical Oncology (ASCO). He also is a member of the American Association for Cancer Research, the American Federation for Clinical Research, and the Association of Subspecialty Professors. Additionally, Dr. Gradishar serves as a consultant to the FDA's Oncology Drug Advisory Committee.

Dr. Gradishar is past-Chair of several ASCO committees, including the Nominating Committee, the Professional Development Committee, the Oncology Training Program Committee, and the Communications Committee. He also previously served on the Committee on Cancer for the American College of Surgeons, as well as numerous study sections, including NIH, NCI, ACS, Komen, and the Alberta Cancer Board.

In addition to his professional memberships, Dr. Gradishar is an editorial board member for numerous journals, including *Journal of Clinical Oncology*, *Oncology*, *Clinical Breast Cancer*, *Journal Watch*, *European Journal of Clinical and Medical Oncology*, *Clinical Cancer Research*, and *JNCCN—Journal of the National Comprehensive Cancer Network*.

Dr. Gradishar is Chair of the NCCN Breast Cancer Panel and a member of the NCCN Breast Cancer Risk Reduction Panel. He also has participated on several committees for the NCCN Oncology Research Program.



**Tarah Ballinger, MD**, is the Vera Bradley Foundation Scholar in Breast Cancer Research and Associate Professor in Clinical Medicine in the Division of Hematology/Oncology at Indiana University School of Medicine. Dr. Ballinger serves as a breast oncologist and the Associate Director of Supportive Oncology for the Indiana University Simon Comprehensive Cancer Center. Her research is focused on cancer survivorship, with a particular focus on exercise oncology and on extending survivorship care to those living with metastatic disease.

Dr. Ballinger received her medical degree from Indiana University. She completed her internal medicine residency at Vanderbilt University and her oncology fellowship at Indiana University.

Dr. Ballinger is a member of the NCCN Cancer-Related Fatigue Panel and the Survivorship Panel.



**Meena S. Moran, MD**, is Professor of Therapeutic Radiology at Yale School of Medicine and Director of the Yale Breast Radiotherapy Program for the Yale New Haven Hospital Healthcare System. Dr. Moran earned her medical degree from Cornell University Medical College. She completed her post-graduate training at Columbia University's St. Luke's – Roosevelt Hospital and Yale New Haven Hospital. Dr. Moran is board-certified in radiation oncology.

Dr. Moran's clinical research focuses on identifying clinical, pathological, and molecular factors that may predict local-regional relapse after breast conserving surgery. Her other research interests include radiation therapy in patients with breast cancer, examining ethnic variations in breast cancer, and investigating radiation techniques. Additionally, she has published in furthering quality improvement, guidelines, and standards in breast health care delivery.

Dr. Moran has been actively involved with many professional organizations and has had leadership roles for the American Society of Clinical Oncology (ASCO), the American Society of Radiation Oncology (ASTRO), Society for Surgical Oncology (SSO), the National Accreditation for Program for Breast Centers (NAPBC), the American Board of Radiology (ABR). She co-chaired the SSO/ASTRO margins guidelines for breast conservation therapy for both invasive cancers and for DCIS. Additionally, as a founding board member for the NAPBC through the American College of Surgeons, Dr. Moran worked to establish national standards for breast center programs across the country and was involved in the development of the NAPBC's pilot program for surveying centers for accreditation. She also has been on numerous journals' editorial boards including *Journal of Clinical Oncology* and *The Breast Journal*, has served as Associate Senior Breast Editor for *International Journal of Radiation Therapy, Biology, Physics* for 5 years, and is currently an Associate Editor for *Breast Cancer Research & Treatment*.

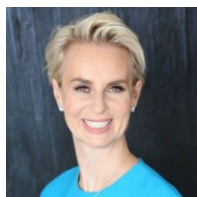
Dr. Moran has been a member of the NCCN Breast Cancer Panel since 2015 as a radiation specialist and is currently serving as the Breast Panel's Vice Chair.



**Heather A. Parsons, MD, MPH**, is a medical oncologist at Dana-Farber Cancer Institute and Assistant Professor of Medicine at Harvard Medical School. Her research focuses on the use of blood-based biomarkers to develop tools to better direct existing treatments, to avoid overtreatment, and to develop new treatments to improve the lives of patients with breast cancer.

Dr. Parsons is a graduate of Dartmouth College and has a Master of Public Health from Johns Hopkins Bloomberg School of Public Health. She received her medical degree from Drexel University College of Medicine, where she was inducted into the AOA Honor Medical Society. She was then an Osier Medicine resident in Internal Medicine at The Johns Hopkins Hospital before completing a fellowship in Medical Oncology at Johns Hopkins Hospital. Dr. Parsons joined the Susan F. Smith Center for Women's Cancers at DFCI where she cares for patients with breast cancer as a medical oncologist.

Her research is supported by awards from the National Cancer Institute, the Susan G. Komen Foundation and the Gateway for Cancer Research.



**Elena Ratner, MD, MBA**, is a Professor in the Department of Obstetrics, Gynecology, and Reproductive Sciences at Yale University School of Medicine. She also serves as Co-Chief in the Section of Gynecologic Oncology at Yale Cancer Center/Smilow Cancer Hospital.

Dr. Ratner received her medical degree from the University of Buffalo. She completed a residency at Yale-New Haven Hospital and a fellowship at Yale University School of Medicine. She later received a master's degree in business administration from the Yale University School of Management. She is board-certified in gynecologic oncology.

Dr. Ratner specializes in ovarian malignancies with expertise in cytoreductive surgery for patients with advanced ovarian cancer, minimally invasive procedures for patients with gynecologic malignancies or complex benign gynecologic conditions, and robotic fertility-sparing surgery for young patients with cancer. Her research interests focus on new targeted drugs for ovarian cancer that will provide truly personalized care, and on reversing chemotherapy resistance in ovarian and uterine cancers. Her other special interests include chemotherapy-targeted drug development, quality-of-life programs for patients, and early cancer detection.

An advocate for cancer survivors, Dr. Ratner is Co-Founder and Director of the Yale Medicine Sexual, Intimacy and Menopause Program (SIMS), one of the first programs in the country to focus on supporting cancer survivors coping with issues that may not be discussed in clinical settings. She also serves as Director of *Discovery To Cure*, a Yale-based program established to provide patients with new methods for the prevention, early detection, and treatment of gynecologic cancers. Additionally, Dr. Ratner is a recipient of multiple clinical and teaching awards, including the Yale University Smilow Cancer Center *Award for Clinical Excellence* and the *Health Network Service Excellence Award*.

Dr. Ratner serves as a member of the NCCN Ovarian Cancer Panel and has contributed to projects for the NCCN Oncology Research Program.



**Jennifer Barsky Reese, PhD**, is an Associate Professor with tenure in the Cancer Prevention and Control Program at Fox Chase Cancer Center.

Dr. Reese graduated summa cum laude from Barnard College in 2001. She completed her doctoral training in Clinical Psychology in 2008 at Rutgers, the State University of New Jersey, followed by a Behavioral Medicine internship at Duke University Medical Center and an American Cancer Society-funded post-doctoral fellowship at the Johns Hopkins School of Medicine. Dr. Reese is a recipient of the New Investigator Award from the American Psychosocial Oncology Society, is current Chair of the Scientific Network on Female Sexual Health and Cancer and is a Fellow of the Society of Behavioral Medicine. She is also actively involved with other scientific organizations including the International Society for the Study of Women's Sexual Health, the International Society for the Study of Sexual Medicine, and the Society of Behavioral Medicine, and the American Psychosocial Oncology Society.

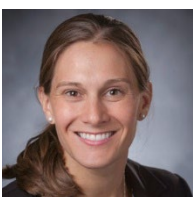
Dr. Reese is a behavioral scientist and licensed psychologist with a program of research focused on developing interventions to improve care and outcomes related to sexual health, relationship function, and quality of life for cancer survivors. Specifically, her work centers on investigating the prevalence and nature of sexual concerns and their effects on cancer survivors' well-being, examining patient-provider communication about sexual health after cancer and developing and evaluating patient and provider-focused interventions to improve communication about sexual health, and developing and evaluating couple-based interventions that address patients' cancer-related sexual and intimacy concerns.

Dr. Reese currently has research funding from the National Cancer Institute and the American Cancer Society for her research and has co-authored over 65 journal articles and book chapters.



**Patricia Robinson, MD**, is Associate Director for Diversity, Equity, and Inclusion at Robert H. Lurie Comprehensive Cancer Center of Northwestern University. She is an Associate Professor in the Division of Hematology and Oncology, and a medical oncologist specializing in treating patients with breast cancer. Dr. Robinson's clinical interests include the impact of metabolic syndrome on breast cancer outcomes, disparities in cancer treatment outcomes, health literacy, and participation in clinical trials.

Dr. Robinson received her undergraduate degree from the University of Michigan and medical degree from Michigan State University College of Human Medicine. She completed her Internal Medicine residency at Loyola University Medical Center and completed her hematology/oncology fellowship at Fox Chase Cancer Center. She returned to Loyola Medical Center as a member of the breast oncology team specializing in malignant breast disorders, as well as directing the cancer survivorship program. She also served as the Associate Dean of Diversity, Equity, and Inclusion at Stritch School of Medicine. Dr. Robinson is a board-certified medical oncologist.



**Laura H. Rosenberger, MD, MS**, is an Associate Professor of Surgery at Duke University School of Medicine, and surgical oncologist at Duke Cancer Institute. Dr. Rosenberger is passionate about helping patients understand the complex and personal diagnosis of breast cancer. As a surgeon, she manages all types of breast cancer but specializes in phyllodes tumors, fibroadenoma and fibroepithelial lesions, and breast sarcomas.

Dr. Rosenberger received her medical degree from Thomas Jefferson University, Sidney Kimmel Medical College. She received her MS from University of Virginia. She completed her general surgery residency at University of Virginia School of Medicine, and her breast surgical oncology fellowship at Memorial Sloan Kettering Cancer Center. Dr. Rosenberger is a member of the NCCN Breast Cancer Panel.



**Cesar A. Santa-Maria, MD, MSCI**, is Assistant Professor of Oncology at The Sidney Kimmel Comprehensive Cancer Center at Johns Hopkins.

Dr. Santa-Maria's clinical expertise is in the care for patients with breast cancer. His research is focused on developing new treatments using immunotherapy as well as investigating biological changes related to immunotherapy that may help identify responders or improve treatment strategies. Dr. Santa-Maria has received numerous awards and grants for his research from several organizations, including ASCO, SABCS, NIH, DOD, and other research foundations. He has served as an editorial reviewer for a number of scientific publications, including *Cancer*, *Breast Cancer Research and Treatment*, and *Journal of Clinical Oncology*. He also is an active member of ASCO and the American Association for Cancer Research.

Dr. Santa-Maria earned his medical degree from The University of Texas at Houston Medical School. He completed his residency in internal medicine at The University of Texas Southwestern Medical School and a fellowship in medical oncology at The Sidney Kimmel Cancer Center at Johns Hopkins. He is board-certified in medical oncology.

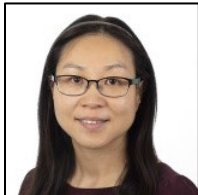
Dr. Santa-Maria is a member of the NCCN Breast Cancer Panel.



**Hatem Soliman, MD**, is an associate member in the Departments of Breast Oncology and Immunology at Moffitt Cancer Center in Tampa, FL. He has served in a leadership capacity as the Medical Director of the Clinical Trials Office since 2018.

Dr. Soliman has extensive experience as a clinical investigator conducting both translational research in breast cancer immunotherapy, and leading numerous clinical trials as principal investigator since joining the faculty at Moffitt in 2008. He also serves as the Course Director for the fellowship clinical research rotation, Medical Director of the Phase I Program, Chair of Moffitt's Clinical Research Leadership Council, and PI for Moffitt's CPDM CCSG application, which was recently rated as outstanding.

Dr. Soliman is a long-time member of the NCCN Breast Cancer Panel. He also serves as a SITC guideline author for breast cancer immunotherapy, and scientific reviewer for the Department of Defense Breast Cancer Research Program Immunology and Clinical Trials study sections.

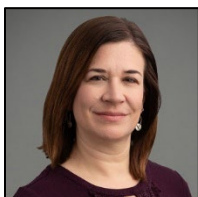


**Mei Wei, MD**, is a medical oncologist at Huntsman Cancer Institute at the University of Utah.

Dr. Wei specializes in breast medical oncology. Her research interests focus on clinical trials, breast cancer outcomes research, cancer epidemiology, and the patient's quality of life.

Dr. Wei received her medical degree from China. She completed internal medicine residency at University of Utah, and hematology/oncology fellowship training at Huntsman Cancer Institution, University of Utah. She is board-certified in internal medicine and medical oncology.

Dr. Wei is a member of the NCCN Breast Cancer Panel.



**Kari B. Wisinski, MD**, is the Division Chief of Hematology, Medical Oncology and Palliative Care at the University of Wisconsin School of Medicine and Public Health and Carbone Cancer Center. Dr. Wisinski is a breast cancer medical oncologist and has won several UW Health awards for her clinical care.

Her research focuses on developing and testing new treatments for breast cancer, especially metastatic disease. Dr. Wisinski has led multiple trials through national and regional research networks, including the Big Ten Cancer Research Consortium (BTCRC) and her research has been supported by the National Cancer Institute, UW Carbone Cancer Center and industry. At the UW Carbone Cancer Center, she is also

the co-leader of the Breast Cancer Disease-Oriented Team and the Associate Director for Clinical Research. Nationally, she has led the BTCRC Breast Cancer Working Group and is a prior chair and current member of the BTCRC Steering Committee. In addition, she is the deputy editor of Clinical Breast Cancer and is a member of the NCCN Steering Committee and Breast Cancer Guidelines Panel.



**Eric H. Yang, MD**, is Associate Clinical Professor of Medicine at the University of California at Los Angeles, where he has served as clinical faculty since 2011. He currently serves as an Associate Clinical Professor of Medicine at the Ronald Reagan University of California, Los Angeles Medical Center.

He obtained his undergraduate and medical degrees at the University of Illinois at Chicago College of Medicine and completed his internal medicine residency and cardiology fellowship at Harbor-UCLA Medical Center, where he served as chief fellow.

He officially established the UCLA Cardio-oncology Program in 2016 which he continues to head. In 2022, the program was designated a Gold Tier Cardio-Oncology Center of Excellence by the International Cardio-Oncology Society.

His clinical and research interests include valvular disease, advanced multimodality cardiac imaging, medical education, echocardiography. He has served as Associate Program Director of the UCLA Cardiovascular Diseases Fellowship since 2013.

Dr. Yang is a member of the UCLA-Jonsson Comprehensive Cancer Center, NCCN Survivorship Panel.