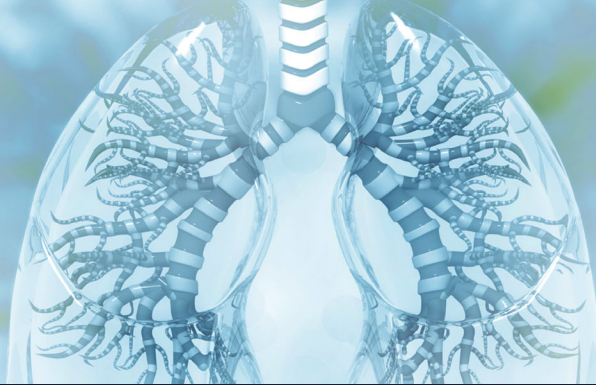


Resectable NSCLC:

The Role of Checkpoint Inhibitors



OVERVIEW

The goal of this initiative is to provide education to assist clinicians in providing appropriate care for patients with non-small cell lung cancer (NSCLC) through a greater understanding of the significance of biomarker testing to predict treatment response, the role of PD-1/PD-L1 inhibitors in the neoadjuvant and adjuvant settings, and how to apply this information into practice with a patient-centric approach.

TARGET AUDIENCE

This program is designed to meet the educational needs of medical oncologists, nurse practitioners, physician assistants, and other health care professionals involved in the care of patients with NSCLC.

LEARNING OBJECTIVES

Following this program, participants should be able to:

- Recall the importance of testing for specific biomarkers in determining appropriate therapy for individual patients with NSCLC before and after surgery
- Explain the latest guidelines and clinical data on the role of PD-1/PD-L1 inhibitors in the neoadjuvant and adjuvant settings
- Compare and contrast different PD-1/PD-L1 inhibitor options available for neoadjuvant and adjuvant therapy in resectable NSCLC
- Recognize approaches to ensure shared decision-making with patients

ACCREDITATION INFORMATION



JOINTLY ACCREDITED PROVIDER™
INTERPROFESSIONAL CONTINUING EDUCATION

In support of improving patient care, National Comprehensive Cancer Network (NCCN) is jointly accredited by the Accreditation Council for Continuing Medical Education (ACCME), the Accreditation Council for Pharmacy Education (ACPE), and the American Nurses Credentialing Center (ANCC), to provide continuing education for the healthcare team.

Physicians

NCCN designates this live activity for a maximum of 1 *AMA PRA Category 1 Credits*™. Physicians should claim only the credit commensurate with the extent of their participation in the activity.

Nurses

NCCN designates this educational activity for a maximum of 1.0 contact hours.

PAs

NCCN has been authorized by the American Academy of PAs (AAPA) to award AAPA Category 1 CME credit for activities planned in accordance with AAPA CME Criteria. This activity is designated for 1.0 AAPA Category 1 CME credit. PAs should only claim credit commensurate with the extent of their participation.

SUPPORTERS

This activity is supported by an educational grant from Genentech, a member of the Roche Group.

This activity is supported through an independent educational grant from Merck & Co., Inc., Rahway, NJ, USA.

Provided by



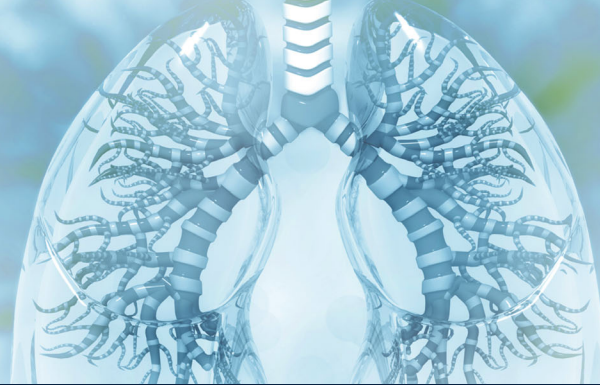
National
Comprehensive
Cancer
Network®



The
France
Foundation

Resectable NSCLC:

The Role of Checkpoint Inhibitors



FACULTY

Jessica R. Bauman, MD

Fox Chase Cancer Center

Debora Bruno, MD, MS

*Case Comprehensive Cancer Center/
University Hospitals Seidman Cancer Center and
Cleveland Clinic Taussig Cancer Institute*

Matthew Gubens, MD, MS

UCSF Helen Diller Family Comprehensive Cancer Center

Sandip Patel, MD

UC San Diego Moores Cancer Center

Beth Sandy, MSN, CRNP

Abramson Cancer Center at the University of Pennsylvania

James Stevenson, MD

*Case Comprehensive Cancer Center/
University Hospitals Seidman Cancer Center and
Cleveland Clinic Taussig Cancer Institute*

NCCN CONTINUING EDUCATION DISCLOSURE POLICY

It is the policy of NCCN that all planners, faculty, moderators, authors, reviewers and anyone involved in the planning and delivery of NCCN continuing education activities are expected to disclose **ALL** financial relationships they have had in the past **24 months** with ineligible companies. The ACCME Standards for Integrity and Independence require that individuals who refuse to provide this information will be disqualified from involvement in the planning and implementation of accredited continuing education presented by NCCN. NCCN identifies, mitigates and discloses to learners all relevant financial relationships.

In addition, all content has been reviewed to ensure education promotes safe, effective patient care and does not promote the products or services of an ineligible company. Content, including any presentation of therapeutic options, is fair, balanced, evidence-based, scientifically accurate, and free of commercial bias and marketing.

Definitions

Ineligible Company: An ineligible company is any entity whose primary business is producing, marketing, selling, re-selling, or distributing healthcare products used by or on patients.

Relevant Financial Relationships: Financial relationships of any dollar amount occurring within the past **24 months** are defined as relevant if the educational content an individual can control is related to the business lines or products of an ineligible company. There is no minimum financial threshold. We ask for disclosure of **ALL** financial relationships with ineligible companies, regardless of the amount and regardless of the potential relevance of each relationship to the education.

Faculty Disclaimers

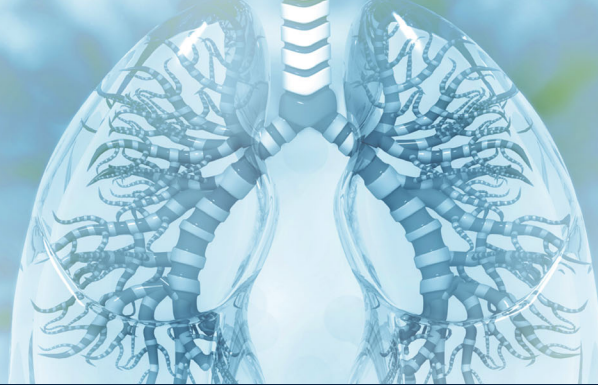
All faculty for this continuing education activity are competent in the subject matter and qualified by experience, training, and/or preparation for the tasks and methods of delivery.

Faculty presentations may include discussion of off-label use. Faculty will disclose that the use in question is not currently approved by the FDA per the product labeling or marketing.

Unlocking the Potential of Neoadjuvant
and Adjuvant Immunotherapy in

Resectable NSCLC:

The Role of Checkpoint Inhibitors



NCCN AND THE FRANCE FOUNDATION STAFF DISCLOSURES

None of the other planners for this educational activity have relevant financial relationships to disclose with ineligible companies whose primary business is producing, marketing, selling, re-selling, or distributing healthcare products used by or on patients.

FACULTY DISCLOSURES

The faculty listed below have the following relevant financial relationships with ineligible companies to disclose. All of the relevant financial relationships listed for these individuals have been mitigated.

Jessica R. Bauman, MD

EMD Serono: Consulting Fees

Pfizer Inc.: Consulting Fees

Debora Bruno, MD, MS

Amgen Inc.: Consulting Fee

AstraZeneca Pharmaceuticals LP: Consulting Fee; Grant/Research Support

Bristol-Myers Squibb Company: Consulting Fee

Daiichi-Sankyo Co.: Consulting Fee

Eli Lilly and Company: Consulting Fee

Mirati Therapeutics, Inc.: Consulting Fee

Novartis Pharmaceuticals Corporation: Consulting Fee

Syneos Health: Consulting Fee

Matthew Gubens, MD, MS

Amgen Inc.: Grant/Research Support

AnHeart Therapeutics: Consulting Fee

AstraZeneca Pharmaceuticals LP: Consulting Fee

Atreca, Inc.: Consulting Fee

Cardinal Health: Consulting Fee

Genzyme: Consulting Fee

Genentech/Roche: Consulting Fee

Gilead Sciences, Inc.: Consulting Fee

Guardant Health: Consulting Fee

Johnson & Johnson: Grant/Research Support

Invitae Corporation: Consulting Fee

iTeos Therapeutics: Consulting Fee

Merck & Co., Inc.: Grant/Research Support

OncoMed Pharmaceuticals: Grant/Research Support

sanofi-aventis U.S.: Consulting Fee

Summit Therapeutics Inc.: Consulting Fee

Surface Oncology: Consulting Fee

Trizell Ltd: Grant/Research Support

Resectable NSCLC:

The Role of Checkpoint Inhibitors



FACULTY DISCLOSURES (CONTINUED)

The faculty listed below have the following relevant financial relationships with ineligible companies to disclose. All of the relevant financial relationships listed for these individuals have been mitigated.

Sandip Patel, MD

Amgen Inc.: Grant/Research Support; Scientific Advisor
AstraZeneca Pharmaceuticals LP: Scientific Advisor
AstraZeneca Pharmaceuticals LP/MedImmune Inc.: Grant/Research Support
Bristol-Myers Squibb Company: Grant/Research Support; Scientific Advisor
Certis Oncology: Scientific Advisor
Eli Lilly and Company: Grant/Research Support; Scientific Advisor
Fate Therapeutics: Grant/Research Support
Jazz Pharmaceuticals Inc.: Scientific Advisor
Genentech, Inc.: Scientific Advisor
Gilead Sciences, Inc.: Grant/Research Support
Illumina, Inc.: Scientific Advisor
Iovance Biotherapeutics, Inc.: Grant/Research Support
Merck & Co., Inc.: Grant/Research Support; Scientific Advisor
Pfizer Inc.: Grant/Research Support; Scientific Advisor
Rakuten Medical, Inc.: Scientific Advisor
Roche Laboratories, Inc./Genentech, Inc.: Grant/Research Support
SQZ Biotechnologies Company: Grant/Research Support
Tempus Labs, Inc.: Scientific Advisor

Beth Sandy, MSN, CRNP

AbbVie, Inc.: Consulting Fee
Amgen Inc.: Product/Speakers Bureau
AstraZeneca Pharmaceuticals LP: Product/Speakers Bureau
Janssen Pharmaceutica Products, LP: Consulting Fee
Eli Lilly and Company: Product/Speakers Bureau
Jazz Pharmaceuticals Inc.: Product/Speakers Bureau
Merck & Co., Inc.: Product/Speakers Bureau
Takeda Pharmaceuticals North America, Inc.: Product/Speakers Bureau

James Stevenson, MD

Alpha Oncology: Grant/Research Support
Amgen Inc.: Grant/Research Support
Arcus Biosciences, Inc.: Consulting Fees
Black Diamond Therapeutics, Inc.: Grant/Research Support
Medtronic, Inc.: Consulting Fees
Merck & Co., Inc.: Grant/Research Support